

ESTÁGIO DOS TRABALHOS

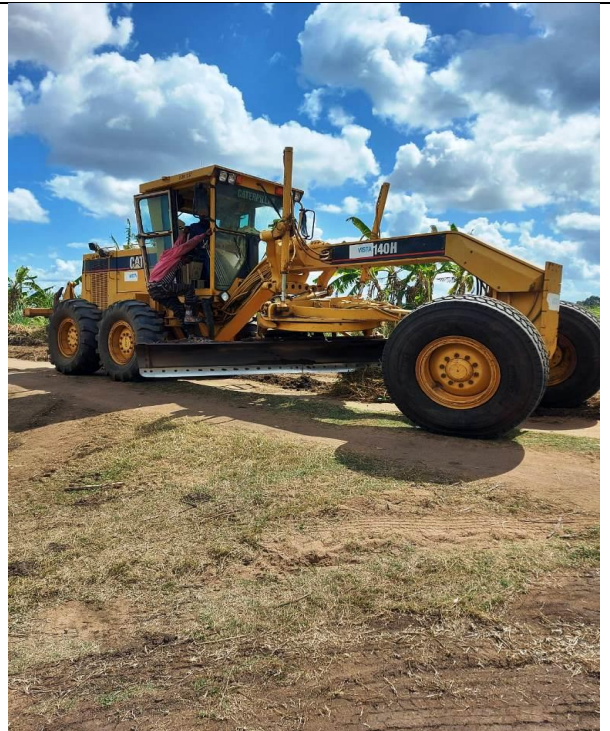
FOTOGRAFIAS

Data 11/08/2023

A – PRELIMINARES (Mobilização, Equipamentos e Materiais)



1 Escritorio do Empreiteiro e Fiscalização



2 Tractors in Yard



3 JCB-Machine

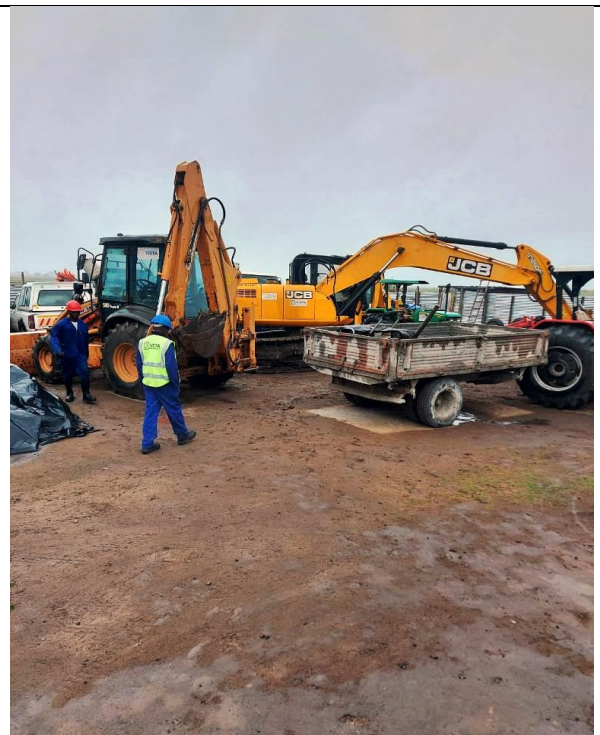


Foto 4: Big Excavator

B – CAPTAÇÃO



Foto 5: Pump house at the river



Foto 6: Inside the pump room briefing to Administradore do Distriti



Foto 7: Intake area



Foto 8: Pump Room

C – SISTEMA DE IRRIGAÇÃO- MARACHAS



Foto 11: Marachas works in progress



Foto 12: Hidrantes construction



Foto 13: Marachas making team at work



Foto 14: Tractors in the field



Foto 15: Field levelling with Tractor



Foto 16: Tractors in field

D – VIAS DE ACESSO E DRENAGEM



Foto 17: Poor condition of the access road



Foto 18: Field access roads need proper levelling and grading accordingly



Foto 19: JCB machine excavating the field drains

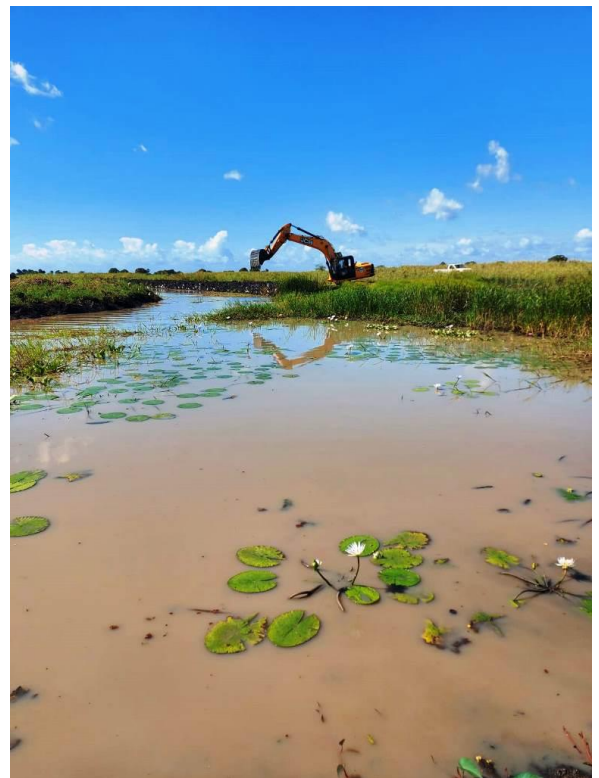


Foto 20: The JCB Excavator cleaning the Drainage canals

E – ELECTRICIDADE



F – SALVAGUARDAS AMBIENTAIS E SOCIAIS

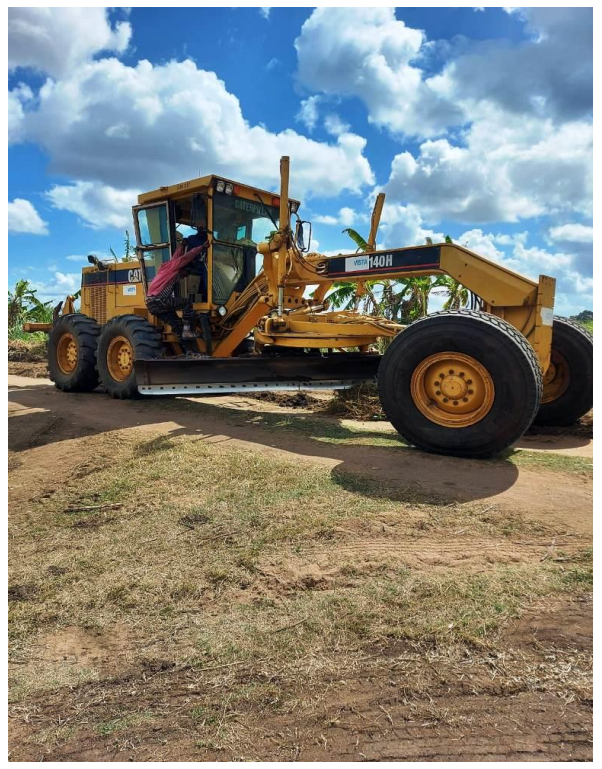


Foto 27: ESHS board at the entrance

Foto 28: Workers equipped with safety material



IRRIGA team site visit 090823



Grader machine in the field